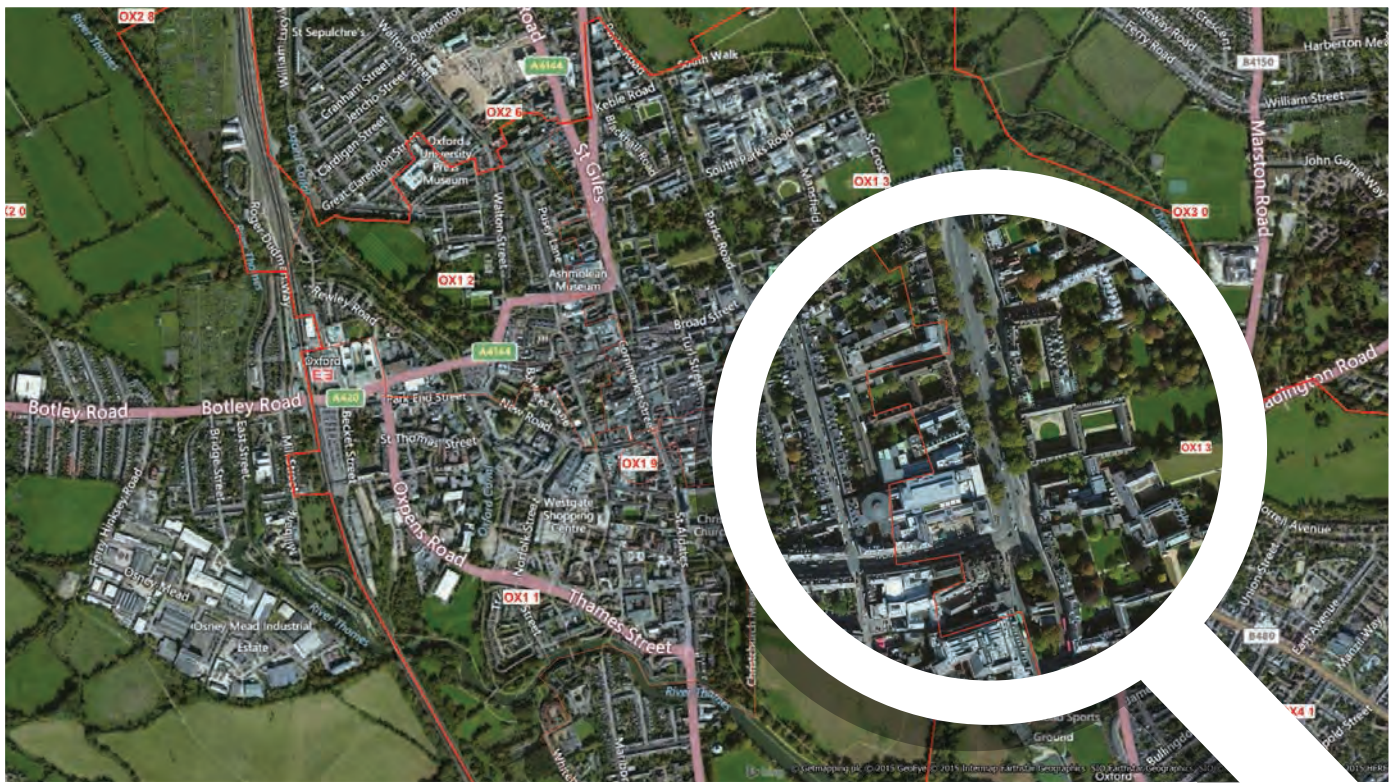


Xtreme Accuracy XYZ Postcode Boundaries



Ideal for Sales Territories, Marketing Campaigns, Statistical Maps, GIS Analyses and much more.

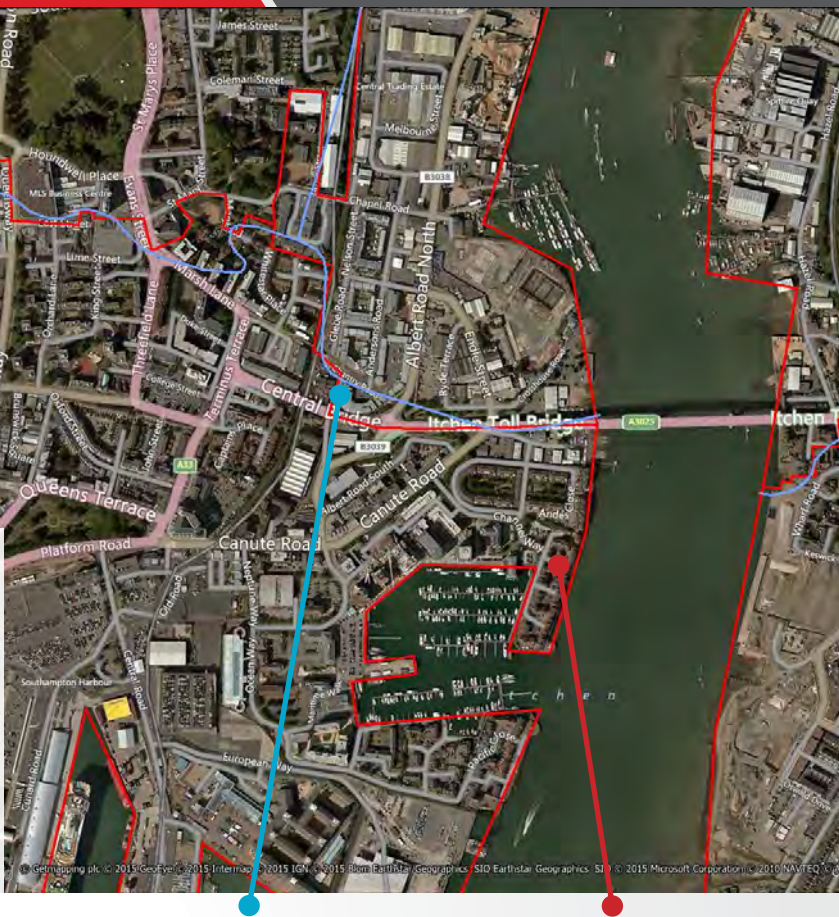
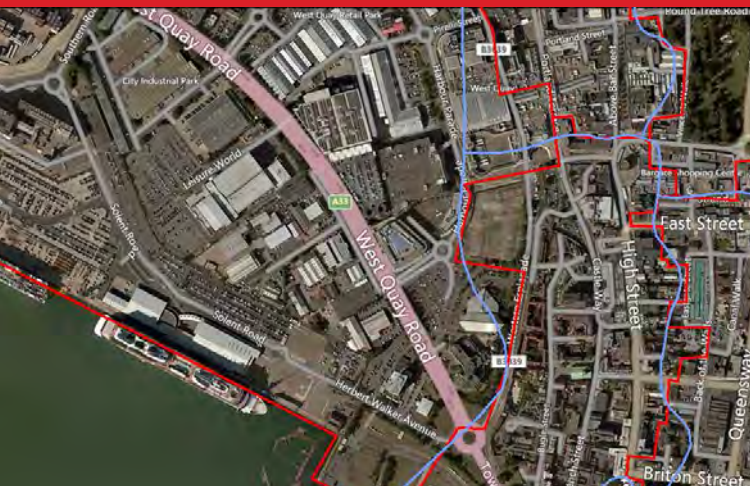


Postcode Boundaries are probably the most used way to construct sales territories, analyse statistics, plan marketing campaigns, and a great deal more. So when you need a cost effective and accurate set of boundaries at Postcode Area (e.g. EH), Postcode District (e.g. EH22), or Postcode Sector (e.g. EH22 2) level, then you can rely on the XYZ Xtreme Accuracy Postcode Boundary GIS data set. This may be used at almost any zoom level from general UK mapping down to detailed street maps. We recently enhanced the data by re-drawing the boundaries using air photography to ensure that our data not only includes the correct unit postcodes points in each Sector, but also lines up with real features on the ground. This not only improves data accuracy but also ensures a better looking result.

- Your choice of file formats: MapInfo Tab, ESRI Shape or Google KML.
- Your choice of an annual rental or perpetual one-off licence fee.
- Optional annual updates.

We only offer one top quality full resolution product for a very competitive price, so there is no 'low res' degraded product.

**UK Wide
Postcode Sectors
from £499 pa
(1 user)**



Technical Details

Standard attribute columns, depending on Area, District or Sector, are:

Pcode_Area: Example "L"

Pcode_Dist: Example "L39"

Pcode_Sect: Example "L39 8"

Pcode_Num: Example "39"

Post_Town: Example "Liverpool" - The Royal Mail have one post town per postcode area.

Area_SqKm: Example "18.7585"

Author: Example "XYZ CF" - Person who last edited the polygon.

Scale: Example "1000000" - Either 1000000 (displayed at all scales), or 50,000 (displayed at large scales only, e.g. PO Box sectors).

Revised: Example "12/11/2013" - Last edit date.

Code: 38.01 - Postcode Area, 38.02 - Postcode District, 38.03 - Postcode Sector, and 38.04 Floating Postcode Sector Used for PO Boxes. The latter is a small polygon that floats above the main Sector in the position of the Royal Mail Sorting Office.



We separately provide a Line file for the Postcode Boundaries at Area, District and Sector Level. This is without the coastline and is intended for display purposes. The Code column is populated with 38.01 for an Area Boundary, 38.02 for a District Boundary and 38.03 for a Sector Boundary. Other columns are present to indicate the Left and Right Polygons and Postcodes.

At a small extra cost you can have the Premium Version which has address counts as additional columns. The address counts currently have the number of addresses in each Area, District or Sector from 2004 onwards, based in each case on the mid-year PAF file. These are broken down into a Total, Residential (R), Large User (L) and Non-Residential (N) count. These data let you see areas of growing numbers of addresses, or such things as the potential market in an area, or just the number of leaflets needed for a mail campaign.

For more information call **0131 454 0426** or e-mail sales@xyzmaps.com

32/10 Hardengreen, Business Park,
Dalhousie Road, Dalkeith EH22 3NX



Tel: +44 (0)131 454 0426

www.xyzmaps.com